



# Flight Plan & Site Survey

Created using **RPAS Wilco**<sup>®</sup>

Operation Name:	summerland flyers summerland field
Pilot Name:	██████████
Pilot Certificate:	██████
Flight Start:	January 23, 2023 10:57 AM
Flight End:	January 23, 2023 12:57 PM
Flight Area (Latitude):	49° 34' 51.30" N ( 49.581 )
Flight Area (Longitude):	119° 44' 16.70" W ( -119.738 )
Altitude - Radius:	Alt: 600 ft - Rad: 926.0 m ( 0.5 nm)
Airspace:	UNCONTROLLED
FIR - Contact:	CZVR - 604-586-4500
Weather:	-1.4 Celsius - Partially cloudy

Please ensure you received all required authorizations prior to flight.

## Disclaimer

This Site Survey was created using RPAS Wilco by AIM Robotics. The flight plan contained is intended only for RPAS flights on the date/time and location specified. The user accepts all responsibility for the accuracy and completeness of the information contained.

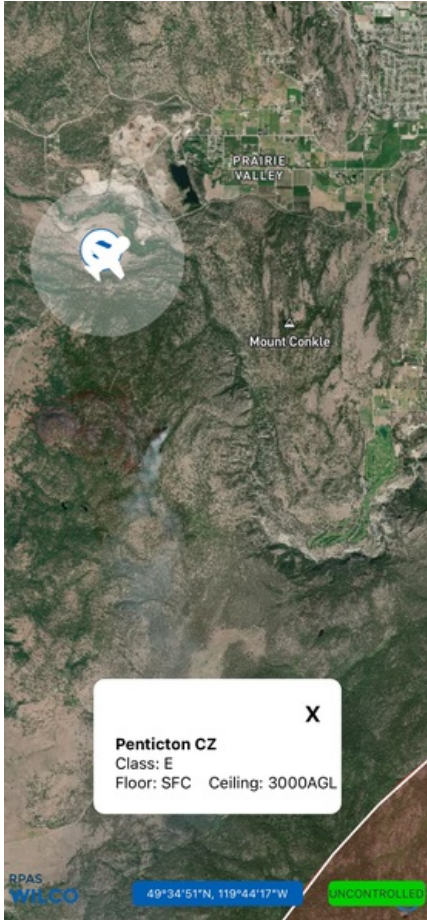
For the complete Terms & Conditions, see

<https://rpswilco.com/#/tnc>



## Included

- Site Survey
- Obstacles (if available)
- Nearby Aerodromes
- Canadian Aviation Regulations
- GFA
- Aerodrome Supplements
  - METAR & TAF (if available)
  - NOTAMS
  - CFS

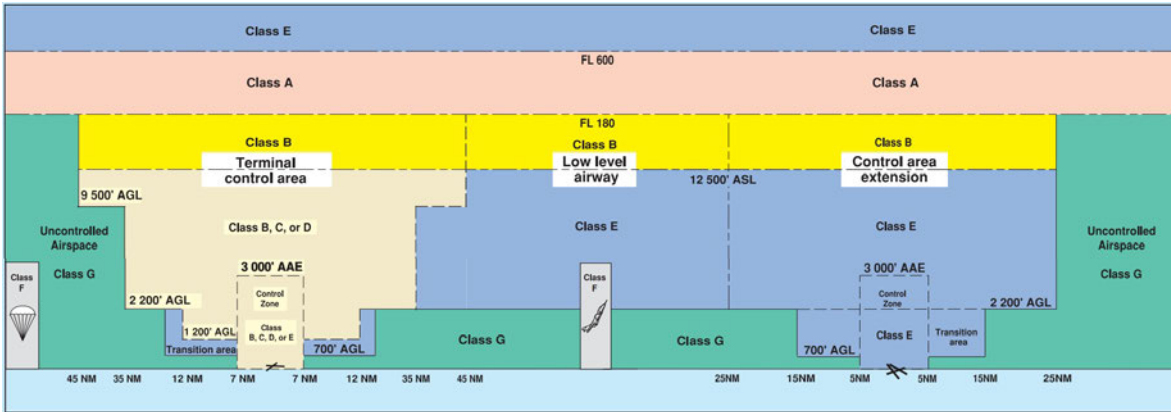
## Flight Map



## MAP Details

	Latitude	Longitude
 <b>MODEL</b>	49° 34' 51.30" N ( 49.581 )	119° 44' 16.70" W ( -119.738 )
 <b>Pilot</b>	49° 34' 54.90" N ( 49.5819 )	119° 44' 20.30" W ( -119.739 )

## Airspace Classification



## Overlying Airspaces

Class	Name	Floor	Ceiling
E	Williams Lake, BC CAE	8000MSL	12500MSL
B	Williams Lake, BC CAE	12500MSL	18000MSL
E	Kelowna/Penticton, BC TA	700AGL	12500MSL
B	Kelowna/Penticton, BC TA	12500MSL	18000MSL
E	Penticton, BC CAE	2200AGL	12500MSL
B	Penticton, BC CAE	12500MSL	18000MSL
E	Kelowna/Penticton XPNDR MANDTRY	6500MSL	12500MSL
E	T701 Airway	2200AGL	12500MSL
B	T701 Airway	12500MSL	18000MSL
E	T703 Airway	2200AGL	12500MSL
B	T703 Airway	12500MSL	18000MSL

## Nearest Aerodromes & Distance from Operation

NARAMATA (CNM6 HELIPORT Reg)	Lat: 49.603 Long: 119.579	11.719 KM 6.33 NM
PENTICTON (CYFF AERODROME Cert)	Lat: 49.463 Long: 119.602	16.378 KM 8.84 NM
PENTICTON REGIONAL HOSPITAL (CPH6 HELIPORT Cert)	Lat: 49.482 Long: 119.576	16.051 KM 8.67 NM
KELOWNA (ALPINE) (CAB7 HELIPORT Cert)	Lat: 49.864 Long: 119.568	33.766 KM 18.23 NM

## Weather Information for Mission Day

Summary: Partly cloudy throughout the day.

Condition	Temperature	Feels Like	Precipitation	Visibility	Cloud Coverage	Wind Speed	Humidity
Partially cloudy	1.4 Celsius	4.3 Celsius	23.0 %	18.5 Km	59.7 %	36.0 kph	76.8 %

## BRITISH COLUMBIA

## AERODROME/FACILITY DIRECTORY

## NARAMATA BC (Heli)

CNM6

<b>REF</b>	N49 36 10 W119 34 43 1ENE 16°E (2015) UTC-8(7) Elev 1872' A5004 A5005
<b>OPR</b>	Finnair Ltd 250-770-0702 Reg PPR
<b>FLT PLN</b>	
<b>FIC</b>	Kamloops 866-WXBRIEF (Toll free within Canada) or 866-541-4101 (Toll free within Canada & USA)
<b>HELI DATA</b>	75' x 75' gravel 200'x 200' max heli length 50', max 8000 lbs
<b>RCR</b>	Opr Days only
<b>COMM</b>	
<b>ATF</b>	ftc 123.2 0.5NM 2200 ASL
<b>PRO</b>	Dep/arr over abandoned railway to minimize noise. (Monitor Penticton 118.5 - See Penticton VTPC)
<b>CAUTION</b>	Power lines SSW of pad.



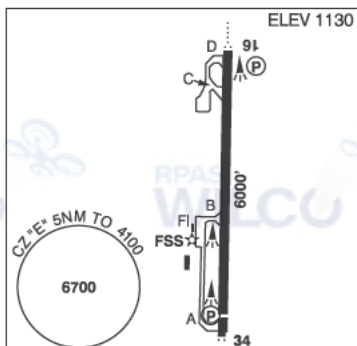
## BRITISH COLUMBIA

## AERODROME / FACILITY DIRECTORY

## PENTICTON BC

CYFF

<b>REF</b>	N49 27 45 W119 36 08 1.8SW 16°E (2015) UTC-8(7) Elev 1130' A5004 A5005 LO2 HI3 CAP RCAP
<b>OPR</b>	TC APM 250-809-4596 Admin 250-770-4422 1600-0030Z± Mon-Fri exc hols H24 Cert
<b>PF</b>	A-1,3,6 B-5 C-4
<b>CUST</b>	AOE/30 (120 with staged off-loading) CANPASS 1-888-226-7277 Permit holders H24 Non-permit holders 1630-0030Z± Mon-Fri
<b>FLT PLN</b>	
<b>FIC</b>	Kamloops 866-WXBRIEF (Toll free within Canada) or 866-541-4101 (Toll free within Canada & USA)
<b>WX</b>	METAR H24. TAF H24, issue times: 01, 07, 13, 19Z.



## SERVICES

<b>FUEL</b>	100LL, JA-1 14-05Z± Mon-Fri 15-04Z± Sat-Sun
<b>OIL</b>	80, 100, 120, 15W50
<b>S</b>	1,2
<b>JASU</b>	CE15 West Jet Encore or Air Canada Express
<b>MILCON</b>	Executive Flight Centre Fuel 250-493-5323

## RWY DATA

Rwy 16(165°)/34(345°) 6000x148 ASPH Thld 34 displ 300'.

RWY CERT Rwy 16/34 AGN IIIB

## APRON

GA prkg on apron N of tml only. Park on N and NE edges. Non-wheeled heli prkg avbl on grass N of main apron. Itinerant pilot and pax access via Gate 88. Lgt acct prkg avbl off Twy A, S end.

Wildfire Heli Ops: Staging and extended prkg on grass N of tml and maint fac, and S of Air Tanker Base along W fence. PPR required for all prkg. Prkg fees.

## RCR

Opr Ltd win maint 15-01Z± Mon-Fri, 17Z± & 23Z± Sat-Sun & hols Nov 1-Mar 31, O/T 2 hr PN call out chg may be levied. CRFI, PLR/PCN

## LIGHTING

16-AO(TE ME) P2, 34-AS(TE ME) P2

PAPI limitation/restriction. PAPI Rwy 34 to be used only within 2NM of thld

## COMM

<b>RADIO</b>	118.5 (V) (emerg only 250-492-3001)
<b>MF</b>	rdo 118.5 5NM 4100 ASL (CAR 602.98)

## NAV

<b>NDB</b>	NARAMATA UNT 312 (M) N49 35 50 W119 36 10
	OKANAGAN ON 356 (L) N49 20 33 W119 34 08
<b>DME</b>	XYF 110.3 Ch 40 N49 27 09 W119 36 14 (1134') reliable only within 10° of centreline
<b>LOC</b>	XYF 110.3 reliable only within 10° of centreline

## PRO

Inbd tfc see VTPC; for night circuit pro see Night Circuit VTPC.

Circuit hgt 2300 ASL. Rgt hand circuits Rwy 34 (CAR 602.96). Heli tng all quadrants, circuits E &amp; W of A/D at 2300 ASL.

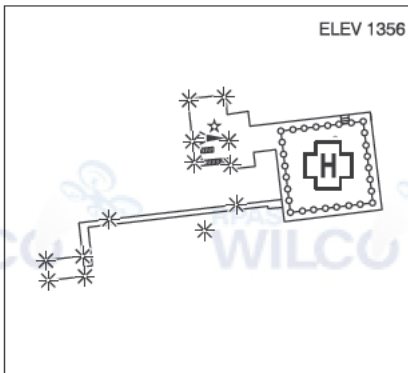
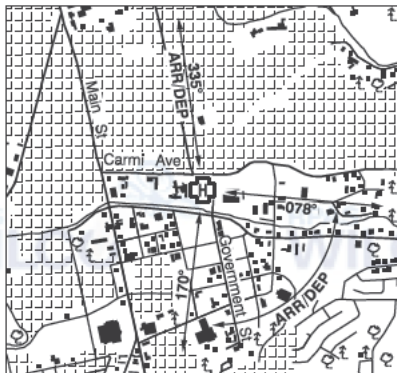
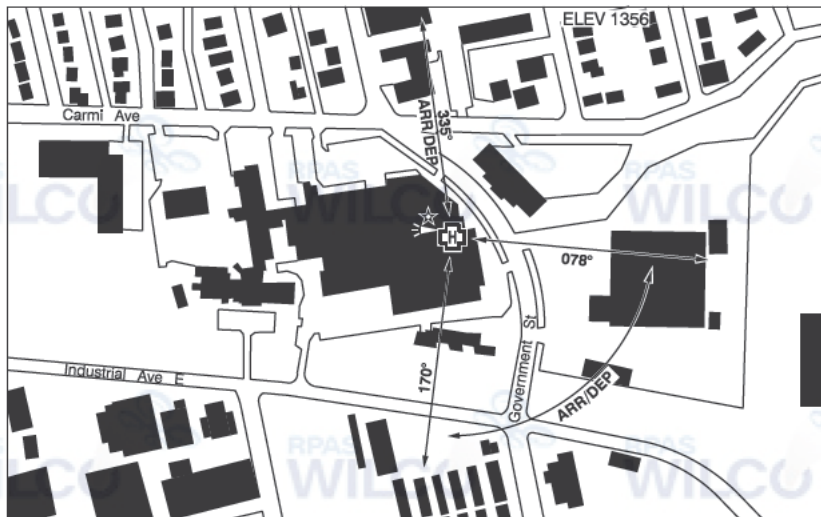
## CAUTION

Only pilots familiar w/ local terrain should use this aprt dur hrs of darkness. Ngpt ops not recommended unless all 7 hazard beacons oprg. Extv heli activity at A/D dur daylight hrs all quads. Due to high terrain, it is recommended pilots proceeding E or W under VFR, attain an alt of 5,000' (ASL) min before leaving the Okanagan Valley. Hi terrain reduces operational length of Rwy 34 PAPI.



**PENTICTON REGIONAL HOSPITAL BC (Heli)**

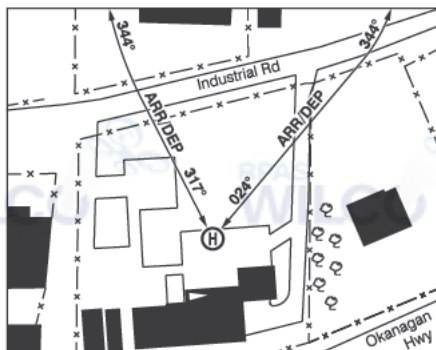
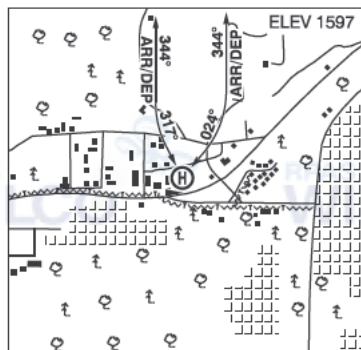
**CPH6**



<b>REF</b>	N49 28 54 W119 34 34 Adj 17°E (2018) UTC-8(7) Elev 1356' A5004 A5005
<b>OPR</b>	Interior Health Authority 250-462-3785 Cert PPR
<b>PF</b>	B-1
<b>FLT PLN</b>	
<b>FIG</b>	Kamloops 866-WXBRIEF (Toll free within Canada) or 866-541-4101 (Toll free within Canada & USA)
<b>HELI DATA</b>	FATO 86' x 86' non-supporting TLOF 60' x 60' CONC Safety Area 115' x 115' 17,000 lbs Max heli overall length 57.4' (CAR 602.96). Elevated/rooftop heli.
<b>RCR</b>	Opr
<b>LIGHTING</b>	RY(ME) green LED ARCAL-123.2 type K
<b>COMM</b>	
<b>MF</b>	Penticton rdo 118.5 5NM 4100 ASL (CAR 602.98)
<b>PRO</b>	Arr/dep 335° fr heli (H1), day/night use (CAR 602.96) Arr/dep 078° to 170° fr heli (H1), day/night use (CAR 602.96)

## KELOWNA (ALPINE) BC (Heli)

CAB7



<b>REF</b>	N49 51 49 W119 34 05 16°E (2013) UTC-8(7) Elev 1597' A5004 A5005
<b>OPR</b>	Alpine Helicopters Inc. 250-769-4111 Cert PPR
<b>FLT PLN</b>	<b>FIC</b> Kamloops 866-WXBRIEF (Toll free within Canada) or 866-541-4101 (Toll free within Canada & USA)
<b>HELI DATA</b>	FATO 86' dia CONC TLOF 51' dia CONC Safety Area 115' dia Max heli overall length 57.4' (CAR 602.96)
<b>RCR</b>	Opr
<b>COMM</b>	<b>RCO</b> Pacific rdo 122.5 (FISE) 126.7 (bcst) <b>ATF</b> tfc 123.2 1.5NM 3000' ASL <b>A/G</b> 165.255
<b>PRO</b>	Arr/dep curved 317° to 344° fr heli, slope 6% (H3) day use only. Arr/dep curved 024° to 344° fr heli, slope 12% (H2) day use only (CAR 602.96).
<b>CAUTION</b>	Unmarked post and P-lines 1645 ASL (42 AGL) aprx 450' S of heli.